

PART OF N.E. 1/4 OF SEC. 1, T.6N., R.2W., PART OF W. 1/2 OF SEC. 31, T.7N., R.1W., <sup>65</sup>  
 & PART OF SECTION 36, T.7N., R.2W., S.L.B.&M.  
**WEBER INDUSTRIAL PARK PLAT "B"**

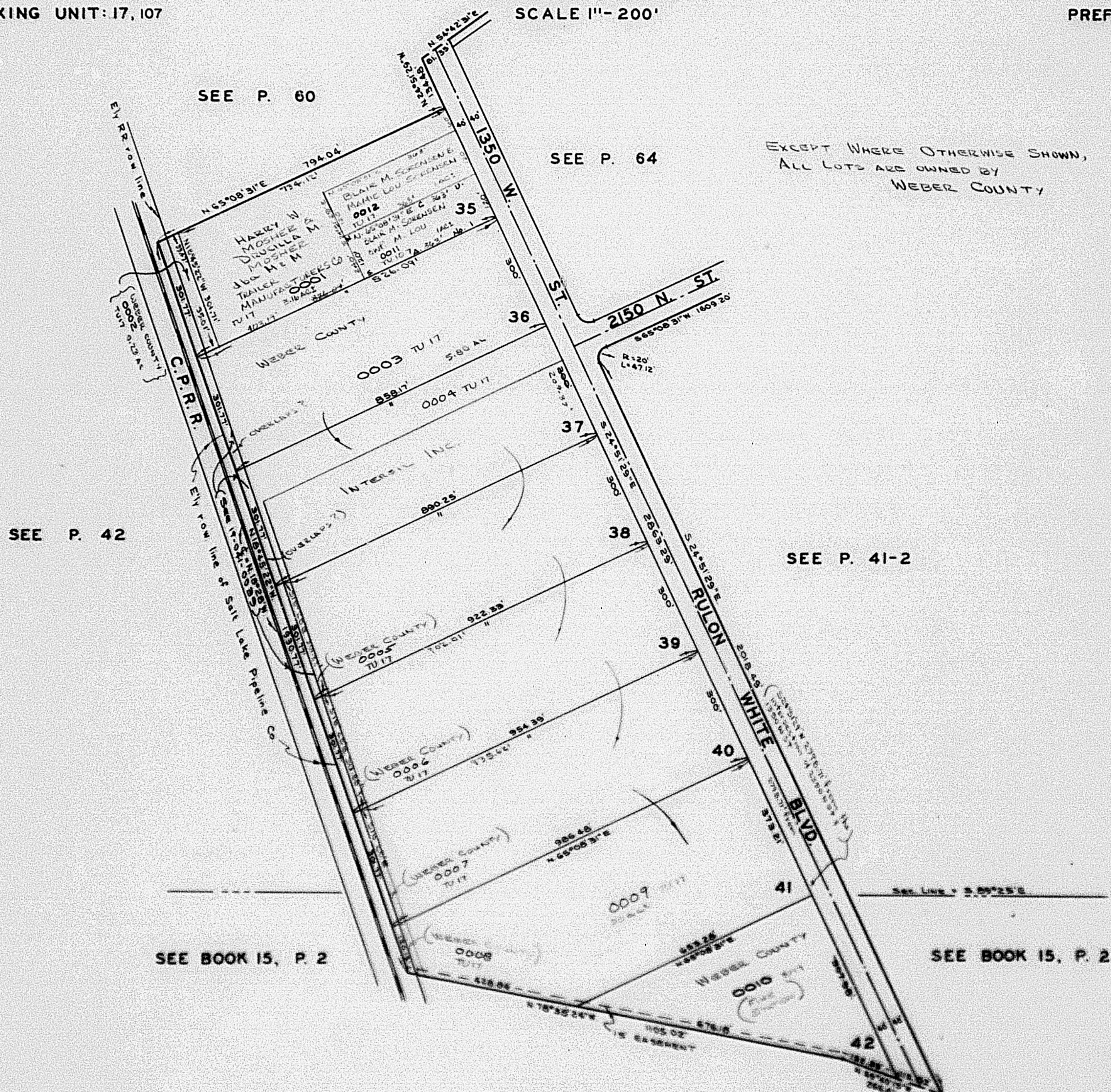
**LOTS 35 TO 42**

**WEBER COUNTY**

TAXING UNIT: 17, 107

SCALE 1" = 200'

PREFIX: 19-065



SEE P. 60

SEE P. 64

EXCEPT WHERE OTHERWISE SHOWN,  
 ALL LOTS ARE OWNED BY  
 WEBER COUNTY

SEE P. 42

SEE P. 41-2

SEE BOOK 15, P. 2

SEE BOOK 15, P. 2